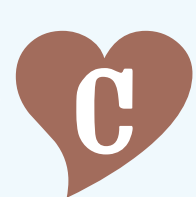


A GUIDE TO YOUR HEALTH PROFESSIONALS

HERE ARE SOME OF THE HEALTH PROFESSIONALS YOU MAY BE REFERRED TO. ASK YOUR ABORIGINAL MEDICAL SERVICE (AMS) IF THEY CAN HELP YOU ARRANGE AND ATTEND THESE APPOINTMENTS.



CARDIOVASCULAR DISEASE
(bad heart/arteries/veins)



DIABETES
(blood sugar)



KIDNEY DISEASE
(kidneys)



RESPIRATORY DISEASE
(bad lungs)



HEALTH WORKER

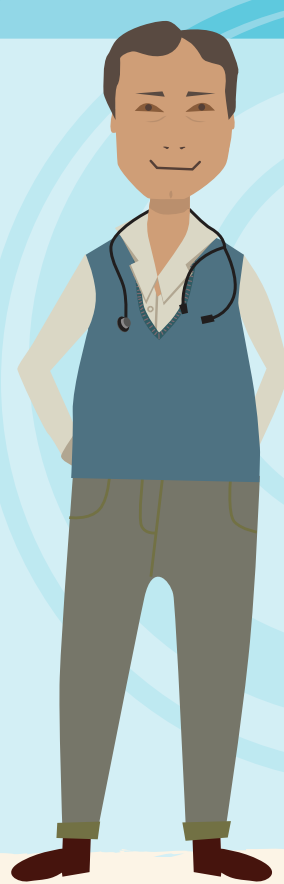
Aboriginal Health Worker

All rounder who assists in treating diseases and injuries, maintains your health records, interprets medical jargon and plans and develops health programs for community.



NURSE

Assists in treating diseases and injuries, maintains health records and provides overall care to you.



DOCTOR

GP

General Practitioners oversee all your care needs. They identify illnesses and make referrals when needed.



PATHOLOGIST

Takes blood and other body fluids for testing to see if you have indicators of disease or not.



CHEMIST

Pharmacist

Pharmacists can work in a Chemist, sell medicines, and can provide advice on use of medicines.



FAMILY

Family may not be health professionals but are very important as they can provide support, e.g. emotionally, transport to appointments, or in helping you understand your health.



DIABETES EDUCATOR

Provides advice to people living with diabetes and how to manage it.



TOBACCO WORKER

Tobacco Resistance and Control Worker

Provides advice and support to people on stopping smoking and being smoke free. Also can run group sessions.



FITNESS ADVISOR

Exercise Physiologist

Provides advice on physical activity and exercise to help people prevent and manage disease.



FOOD EXPERT

Dietitian or Nutritionist

Provides information on healthy eating to help prevent and manage illnesses. They can also run programs on healthy eating.



EYE HEALTH WORKER

Optometrist and Ophthalmologist

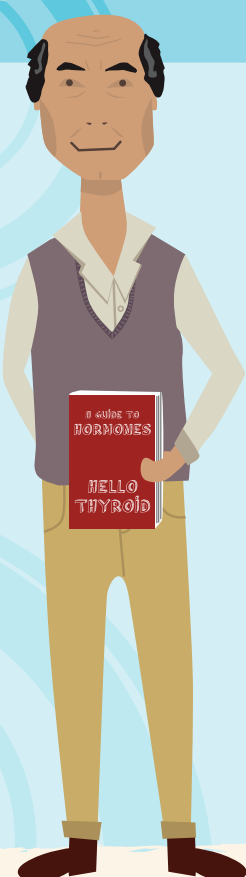
Provides care, checks and tests eyes and vision, such as for retinopathy. Optometrists fit you with glasses. Ophthalmologists are trained to do eye surgery.



FOOT 'DOCTOR'

Podiatrist

Diagnoses and treats any issues relating to the foot or ankle.



DIABETES DOCTOR

Endocrinologist

Diagnoses and manages people with diabetes and other conditions that affect glands e.g. thyroid and pancreas.



HEART DOCTOR

Cardiologist

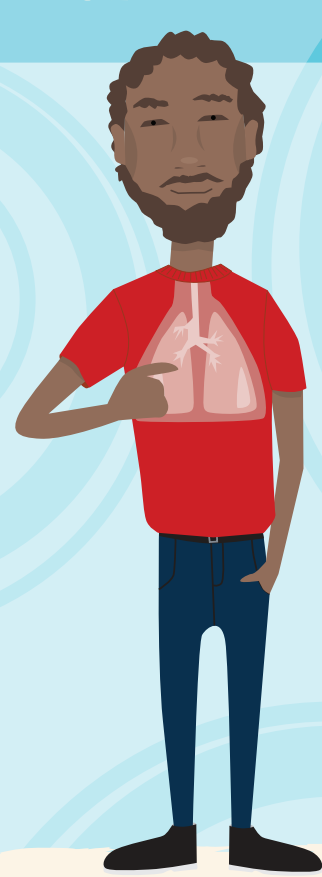
Diagnoses and manages people with diseases and problems of the heart and the circulatory system.



BREATHING EXPERT

Asthma Educator

Teaches people how to manage and control their asthma.



CHEST DOCTOR

Respiratory Specialist

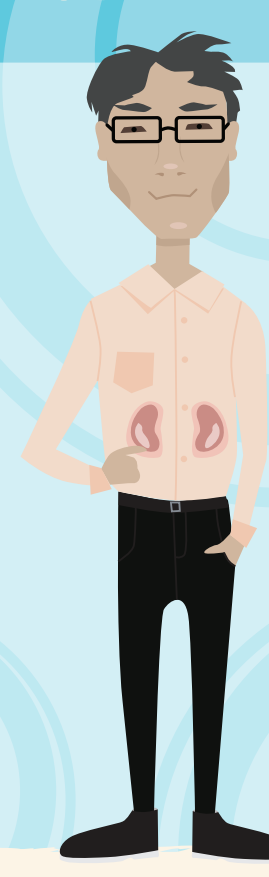
Diagnoses and manages people who are suffering from lung problems.



KIDNEY NURSE

Renal Nurse Educator

Provides advice to people living with kidney disease and help with managing it.



KIDNEY DOCTOR

Nephrologist

Diagnoses and manages people with kidney problems.

OTHER HEALTH PROFESSIONALS



SEWB TEAM

Social Emotional Wellbeing

Psychologist, Psychiatrist, Social Worker/Welfare, Bringing Them Home Counsellors & other Counsellors
Can assist with everyday living, seeking to improve quality of life for individuals, groups and the entire community.
Psychiatrists prescribe medicines.
"Sit down and have a yarn with these people".



EAR EXPERTS

Ear, Nose & Throat Doctor (ENT) and Audiologist

ENTs specialise in ears, noses and throats. An Audiologist tests and helps with hearing.



SPEECHIE

Speech Pathologist

Assists people with verbal communication and swallowing problems by providing advice and practical skills.



PAIN DOCTOR

Pain Specialist

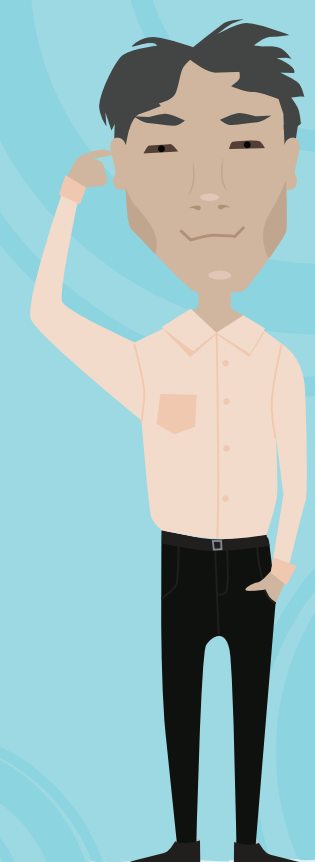
Provides advice on ways to better manage pain.



JOINTS DOCTOR

Rheumatologist

Identifies and manages conditions of the joints, soft tissue and autoimmune diseases.



BRAIN DOCTOR

Neurologist

Determines and manages conditions of the nervous system.



DENTAL TEAM

Dentist and Oral Hygienist

Identifies and manages problems with the mouth and teeth.

This poster reflects health professionals who are commonly involved in the care of people with chronic disease; it is not exhaustive. 'Doctor', 'expert' and other terms listed in the title of each health professional are often used by Aboriginal people in NSW and may not be technically correct. Each individual's experience with chronic disease is different and health professionals will help tailor treatment to best suit the individual's need. This poster is intended to assist patients understand who they are being referred to and why, while the patient is with a health professional. This poster is Resource One of the 'Living Longer Stronger Resource Kit'. Based on artwork by Jasmine Sarin, a Kamilaroi and Jerrinja woman of NSW. To order this poster email: chronicdisease@ahmrc.org.au

www.ahmrc.org.au

The AH&MRC Chronic Disease Program is funded by the NSW Ministry of Health